

INTEGRATING TRAFFIC MANAGEMENT

KEEPING AUCKLAND MOVING

2004 IN REVIEW



TRAFFIC MANAGEMENT UNIT
AUCKLAND

WHAT IS THE TMU?

The Traffic Management Unit (TMU) is a joint collaboration between Transit New Zealand, Auckland City, North Shore City, Manukau City, Waitakere City and Rodney District Councils. Further partners are lined up to join in the near future.

Set up to manage traffic and congestion, improve travel times, information and safety on Auckland city's streets and motorways, the TMU began operating in October 2003. Since its inception, significant progress has been made.

Policy and direction is determined by a Joint Executive Group (JEG) made up of representatives from partner organisations. The TMU is managed by Transit New Zealand at an operational level.

The TMU manages a dynamic traffic network. Traffic volumes throughout Auckland continue to rise each year, particularly in central Auckland with a 30% growth in traffic flow across the Harbour Bridge over the last 10 years.

Keeping the region moving through effective traffic management is critical to its economic health and the social and physical well-being of its residents.

WORKING WITH PARTNERS

The TMU has worked with its partners on various initiatives, providing peer review, expert advice and helping to resolve issues. A consultative framework has been set up by the TMU whereby strategic, technical and area specific issues are dealt with efficiently and effectively. Since October 2003 the TMU has:

- Provided specialist advice and detailed input into Transit New Zealand's and the Territorial Local Authorities' annual plans.
- Resolved conflict between traffic signal and bus signal operations systems.
- Signed a Memorandum of Understanding and agreed Service Level Agreements among the partners.

BUILDING THE TMU TEAM

Cooperation between partners has enabled existing traffic monitoring services to be brought together in one centralised location. In the first year:

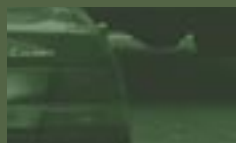
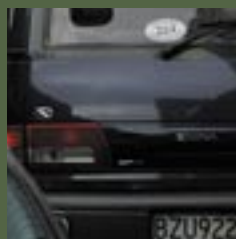
- A dedicated TMU manager, support and administration staff have been appointed.
- Staff have been recruited for more than 75% of available positions.
- Training of control room operators has enabled dedicated traffic management and traffic signals operations 24 hours a day.

DETERMINING TACTICAL RESPONSE AND PROCEDURES

Planned events, such as roadworks and sporting event traffic, as well as incidents such as crashes and breakdowns, are monitored and managed.

The linking of traffic monitoring systems has optimised the safe and efficient movement of people and goods across and around Auckland. To this effect:

- Detour route maps for state highways in the Auckland area have been completed.
- An incident management strategy has been produced through consultation with key stakeholders. It will reduce traffic disruption at incidents.
- The TMU has provided major input into Transit New Zealand's ITS asset management strategy.
- Response times have been standardised in contracts for signal maintenance.
- Quality of traffic signals has begun to be standardised, so users will enjoy a consistent experience across the region.
- The TMU has rationalised contracts for traffic signals, maintenance and upgrades.
- The TMU has provided comments on various transportation initiatives.
- Traffic flows around major projects and roadworks have been managed, such as the Central Motorway Junction upgrade. By using VMS and the traffic website to communicate closures, motorists are given the chance to take alternate routes, easing congestion.



ASSET MANAGEMENT & INFRASTRUCTURE IMPROVEMENTS

Management of the 600 traffic light controlled intersections across the Auckland region has been centralised. This has meant more efficient management of the entire roading network, not just the motorways, but also the arterial road system. There are now more than 100 closed circuit television (CCTV) cameras covering motorways and regional arterials. To ensure maximum benefit is derived from this physical infrastructure, the TMU:

- Provided management of all participants' traffic management assets, including traffic signals, CCTV cameras and Variable Message Signs (VMS).
- Stabilised the computer based traffic management systems, eliminating more than 50 IT faults.
- Optimised traffic signal phasing along a number of routes to save time for public transport, goods vehicles and commuters.
- Took control of 17 new traffic signal intersections in 2004.
- Provided advice on the position and location of traffic signals and their design to maximise operational efficiency.
- Managed the operations of ATMS (Auckland Traffic Management System) versions 2.5 and 3, involving 30 new CCTV cameras and new VMS signs on Onewa Rd and the Southern Motorway.



COMMUNICATING WITH THE PUBLIC

By alerting Aucklanders to ways they can plan their journeys better, the TMU has given drivers more choices and control. Providing timely information to motorists enables them to make informed choices and makes the motorways and roads safer for everyone. The TMU has:

- Launched a dedicated traffic management website: www.trafficnz.info with accompanying print and radio advertising.
- Informed the public about issues on the region's highways in real time.
- Increased public awareness of the TMU through a media communications campaign.



TRAFFIC MANAGEMENT UNIT
AUCKLAND

AN INTEGRATED TRAFFIC MANAGEMENT PARTNERSHIP

